



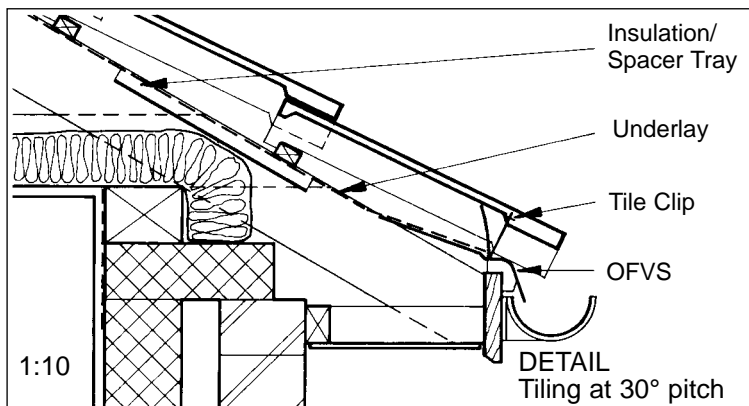
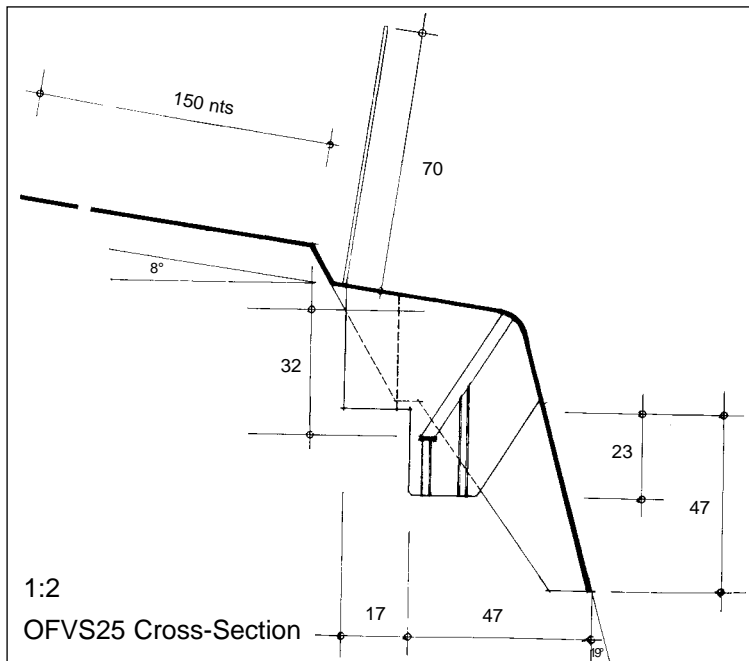
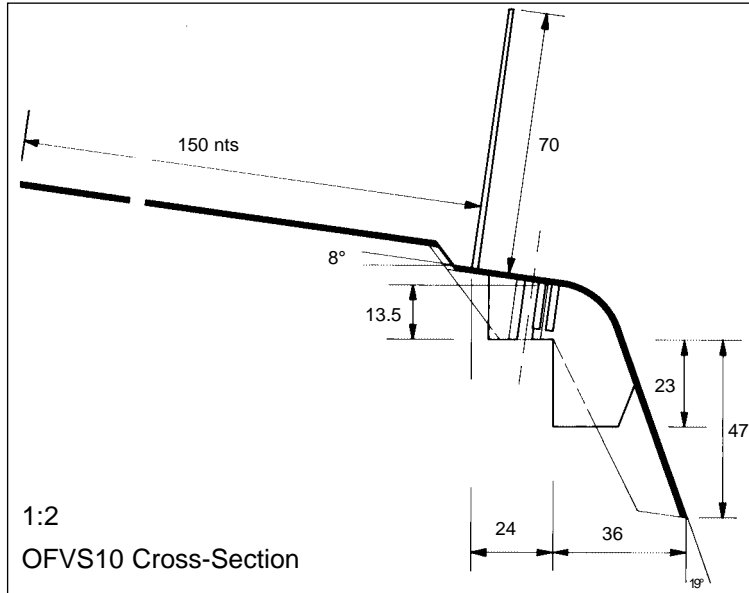
ubbink

Scottish Sales Office and Warehouse,
34 Hawbank Road, East Kilbride G74 5EX,
Telephone (01355) 233848. Fax (01355) 220379
email:scotsales@ubbink.co.uk

Ubbink (UK) Ltd., Head Office
Borough Road, Brackley, Northants, NN13 7TB
Telephone (01280) 700211 Fax (01280) 705332
email:csd@ubbink.co.uk web: www.ubbink.co.uk

OFVS & OFVS/L

OVER FASCIA VENTILATING SYSTEM



In an integral unit, fixed by the roofer, Ubbink's Over Fascia Ventilating system provides the following:

- Eaves level ventilation to comply with current Building Regulations and BS5250 1989
- Semi-rigid hinged underlay support flap
- Large insect and vermin inhibitor
- Discharge of water from underlay to gutter
- Under tile bird excluder (OFVS10 & OFVS25 only)
- Tile clipping anchorage (OFVS10 & OFVS25 only).

CHARACTERISTICS

There are 4 types of OFVS strip available - details of their general characteristics, ventilation capacity and usage are as follows:-

Colour: Black
Material: Polypropylene
Roof Pitches: 15°* - 70°
Effective Length:

OFVS10 & OFVS10/L 900mm

OFVS25 & OFVS25/L 480mm

Movement Allowance: + 5.5 mm/unit

*Below 23° additional support may be needed for the support flap to prevent ponding.

RANGE DETAILS

PRODUCT CODE	VENTILATION	ROOF FINISH
OFVS10*	10mm continuous	Profiled Tiles
OFVS10/L	10mm continuous	Flat Tiles & Slates
OFVS25*	25mm continuous	Profiled Tiles
OFVS25/L	25mm continuous	Flat Tiles & Slates

* These items have integral bird excluder

INSTALLATION

When the fascia is fixed, due allowance must be made for the height of the system. The following figures can be used as guidelines:

Pitch of Roof	Allowance	
	OFVS10 & OFVS10/L	OFVS25 & OFVS25/L
15° - 50°	20mm	35mm
51° - 55°	25mm	40mm
56° - 60°	30mm	45mm
61° - 65°	35mm	50mm
66° - 70°	40mm	55mm

Where OFVS25 & OFVS25/L are used, it may be necessary to use gutter spacers to prevent gutter overshoot.

The above allowances should be adjusted to suit site requirements thus ensuring that the eaves course is laid in the same pitch as the rest of the roof and aligns with the gutter.

TECHNICAL INFORMATION

For most situations, the system may be fixed with 3.35mm diameter, 65mm long galvanised steel nails at 200mm centres. Specify ring shank nails for areas where the basic wind speed exceeds 48 m/s. For high roofs (ridges over 7.2m) and roof areas of high exposure, calculate the fixings required in accordance with BS5534.

It should be noted that some cellular PVC-U fascia boards cannot take vertical fixings. In such cases the system may be fixed through its underlay support flap into a batten fixed to the rafters, behind the fascia board. However, space must be left between the back of the fascia board and the fixing batten to allow the air to pass into the roof void.

At hips and valleys, the system should be sawn to form tight fitting mitred joints. To prevent possible leakage at valleys, a flashing of underlay material should be positioned under the joint to discharge into the gutter.

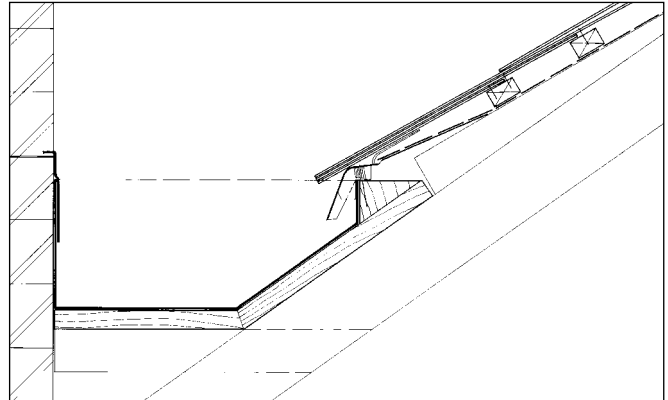
Ubbink Fascia Clips (supplied as an extra for use with OFVS10 & OFVS25 only) attach to the bird excluder comb. The specifier should follow the recommendations of the nominated tile manufacturer and BS5534 with regard to the quantity and location of these tile fixing clips.

The use of insulation spacer trays in conjunction with the Over Fascia Ventilating System is recommended. Suitable Ubbink products are as follows:

- NB Trays - available in 2 rafter sizes and with trays for use with both cold and warm roof construction
- RB100 - for use with any rafter centres in a cold roof construction.

PARAPET/VALLEY GUTTER SITUATION

In a parapet/valley gutter situation in the absence of a fascia, it may be possible to introduce a timber fillet on which the system can be fixed, as shown in the detail below.



OFVS & OFVS/L fixing instructions

